



SOUTH CAROLINA
POWER TEAM

Powering Growth in Electric Cooperative Territory

2022 ANNUAL REPORT

MESSAGE FROM THE BOARD CHAIRMAN



Dear Colleagues,

On behalf of the South Carolina Power Team Board of Trustees and staff, I want to thank you for your ongoing support and commitment to growth in South Carolina and in electric cooperative territory. It is my honor to present our 2022 Year in Review from the South Carolina Power Team.

The electric cooperatives have been hyperfocused on the execution of our comprehensive strategy to foster growth within our territory, create opportunity for those we serve and to attract new industrial electric loads to drive down power costs for our members across the system. As part of our collective efforts, we committed unprecedented resources for site development and incentives, and the incredible results of those investments are on the pages that follow.

By any measure for the electric cooperatives, 2022 was a record year for our system which included \$4.37 billion in new capital investment, 3,969 new jobs and more than 370 megawatts of new electric load to our system. Projects are bigger and more complex than they have ever been in our history.

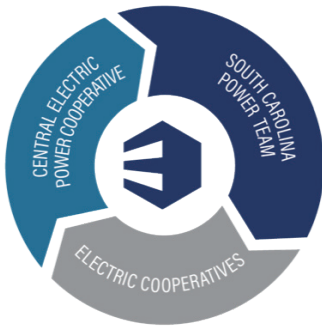
Highlights for 2022 include the launch of our “Upskill Incentive” to offset training costs for existing members who invest in new equipment requiring the upskilling of existing employees. We also conducted community development programs in Laurens County, Berkeley County and Union County. And finally, we created and adopted a \$10 million revolving loan fund, details of which will roll out in 2023.

As we begin 2023, we carry with us the incredible momentum from the year prior, with several significant projects still in negotiation phases. We are grateful for the incredible partnership we have with South Carolina Department of Commerce, South Carolina Ports Authority, economic development organizations at the regional and local level, and our other allies that are critical to winning deals for South Carolina.

Just as important as our statewide allies are the men and women that make up our electric cooperative family. I want to personally thank the employees of each of the local electric cooperatives and Central Electric Power Cooperative, Inc. for delivering on the promises and commitments that are made to companies investing in our territory. Each of these professionals play a critical role to ensure projects are completed on time and that we continue to provide low-cost and highly reliable power service to our members.

A handwritten signature in black ink that reads "Bob Paulling". The signature is fluid and cursive, with the first name "Bob" and last name "Paulling" clearly legible.

Sincerely,
Bob Paulling
President & CEO
Mid-Carolina Electric Cooperative



OUR PARTNERSHIP

The South Carolina Power Team is a full-service, non-profit economic development organization representing the state's 20 consumer-owned electric cooperatives serving two-thirds of the state. The mission of the South Carolina Power Team is to facilitate the growth of jobs, investment and electric load through the attraction of new industrial and commercial activity, as well as the expansion and retention of existing businesses and facilities in the service areas of the electric cooperatives throughout South Carolina.

OUR CORE VALUES



Serve with
humility and
gratitude



Demonstrate
technical expertise,
innovation and
continuous
self-improvement



Be intentional and
passionate about
the work



Be essential to
those
we serve



Communicate,
connect and
convene

South Carolina Power Team — Economic Development, Business Development, Community Preparedness & Marketing

- Promotes job creation, capital investment and electric load through the attraction of new industrial and commercial activity
- Supports expansion and retention of existing businesses
- Provides project management services to simplify and expedite an organization's relocation to our state or an existing industry with its expansion
- Offers assistance with community development, site development and competitiveness initiatives

Electric Cooperatives (20) — Distribution

- Non-Profit & Member-Owned
- Serves more than 1.5 million South Carolinians in all 46 counties
- Builds and maintains the state's largest power distribution system
- Owns and operates more than 72,000 miles of power lines covering 70 percent of South Carolina
- Invests millions of dollars in community infrastructure and site improvement projects

Central Electric Power Cooperative — Transmission

- Non-Profit & Member-Owned
- Provides total wholesale electric service to all of South Carolina's 20 electric cooperatives
- Transmission assets consist of more than 800 miles of lines
- Is the only statewide electric system in South Carolina

COOPERATIVE COMMITMENT TO GROWTH

Since the organization began in 1988, the South Carolina Power Team, through the commitments made by South Carolina's 20 Electric Cooperatives, has continued to invest in economic development and community development within the communities they serve.



\$23.6
BILLION
In announced
capital investment



96,346
NEW JOBS
Served by the 20
Electric Cooperatives



\$24.04
MILLION
In CoRE incentive funds invested
to assist communities in securing
announcements



\$2.475
MILLION
Invested through the
Site Advancement Fund for Master
Planning and Due Diligence



\$118.6
MILLION
Invested in economic development
projects, industrial parks and
community infrastructure*
*By the Electric Cooperatives through the
state's corporate license fee tax credit program

WHAT HAS THE ELECTRIC COOPERATIVE COMMITMENT TO ECONOMIC DEVELOPMENT MEANT TO SOUTH CAROLINA SINCE 2014?

40,028
JOBS CREATED

\$46B
TOTAL ECONOMIC
IMPACT

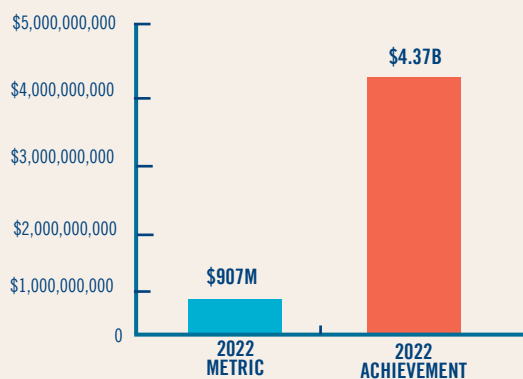
\$13B
CAPITAL
INVESTMENT

AIKEN
BERKELEY
BLACK RIVER
BLUE RIDGE
BROAD RIVER
COASTAL
EDISTO
FAIRFIELD
HORRY
LAURENS
LITTLE RIVER
LYNCHEs RIVER
MARLBORO
MID-CAROLINA
NEWBERRY
PALMETTO
PEE DEE
SANTEE
TRI-COUNTY
YORK

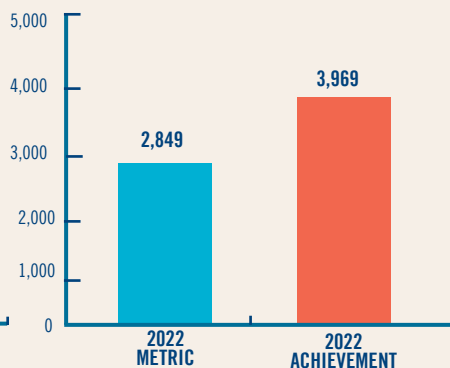
2022 STRATEGIC BLUEPRINT METRICS

The South Carolina Power Team is guided by our Strategic Blueprint. In carrying out its initiatives, the organization effectively serves the electric cooperatives and remains essential to the state's economic development process.

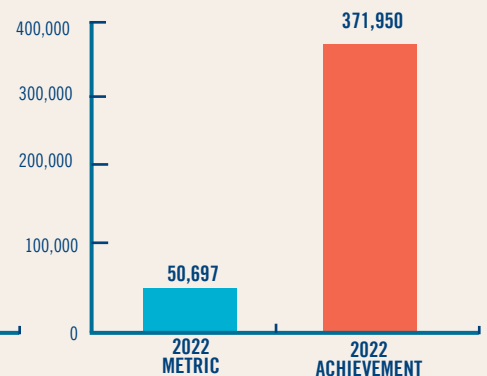
CAPITAL INVESTMENT



NEW JOBS



INSTALLED CAPACITY (KW)



2022 SUCCESS STORIES A RECORD BREAKING YEAR

HIGHLIGHTS OF 2022 ANNOUNCEMENTS

- 28 projects totaling \$4.37 billion in capital investment and 3,969 new jobs
- 18% of projects were expansions, totaling \$74 million in capital investment and 208 new jobs
- FDI company announcements made up \$367.5 million (8%) of our overall capital investment for 2022

HIGHLIGHTS OF 2022 NEW LOCATIONS AND EXPANSIONS

- **Redwood Materials** establishing operations in **Berkeley County**, creating 1,500 jobs with a \$3.5 billion capital investment
Served by Berkeley Electric Cooperative
- **Kontrolmatik Technologies** establishing operations in **Colleton County**, creating 575 jobs with a \$279 million capital investment
Served by Coastal Electric Cooperative
- **Premium Peanut** establishing operations in **Orangeburg County**, creating 130 jobs with a \$64.3 million capital investment
Served by Tri-County Electric Cooperative
- **Shamrock Technologies, Inc.** establishing operations in **Laurens County**, creating 18 jobs with a \$19.4 million capital investment
Served by Laurens Electric Cooperative
- **Pepsi Bottling Ventures, LLC** expanding operations in **Horry County**, creating 27 jobs with a \$15 million capital investment
Served by Horry Electric Cooperative
- **Aerofoam USA** establishing operations in **Abbeville County**, creating 50 jobs with a \$11.5 million capital investment
Served by Little River Electric Cooperative

ANNOUNCED CAPITAL INVESTMENT — \$4.37 BILLION

DOMESTIC: \$4.01 BILLION



INTERNATIONAL: \$367.5 MILLION



ANNOUNCED NEW JOBS — 3,969

DOMESTIC: 3,155

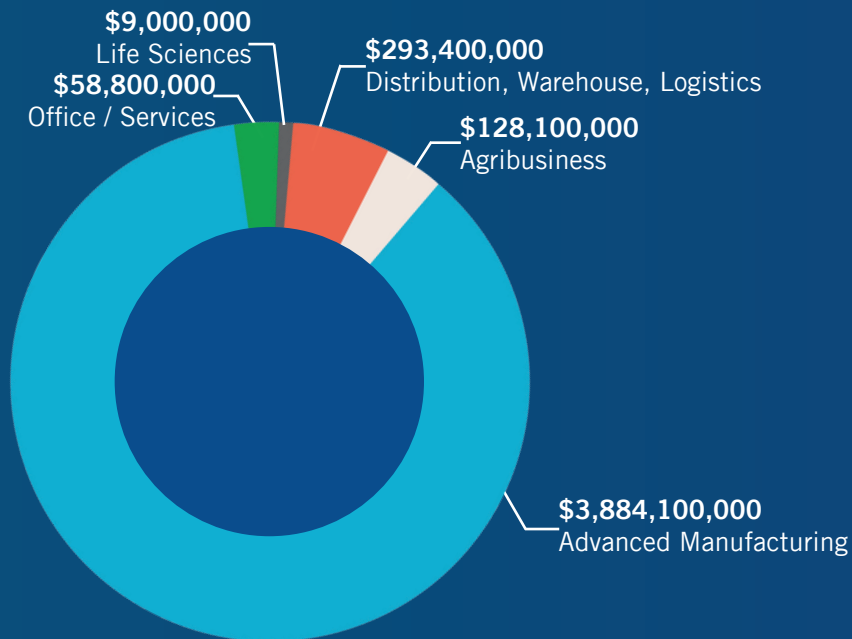


INTERNATIONAL: 814

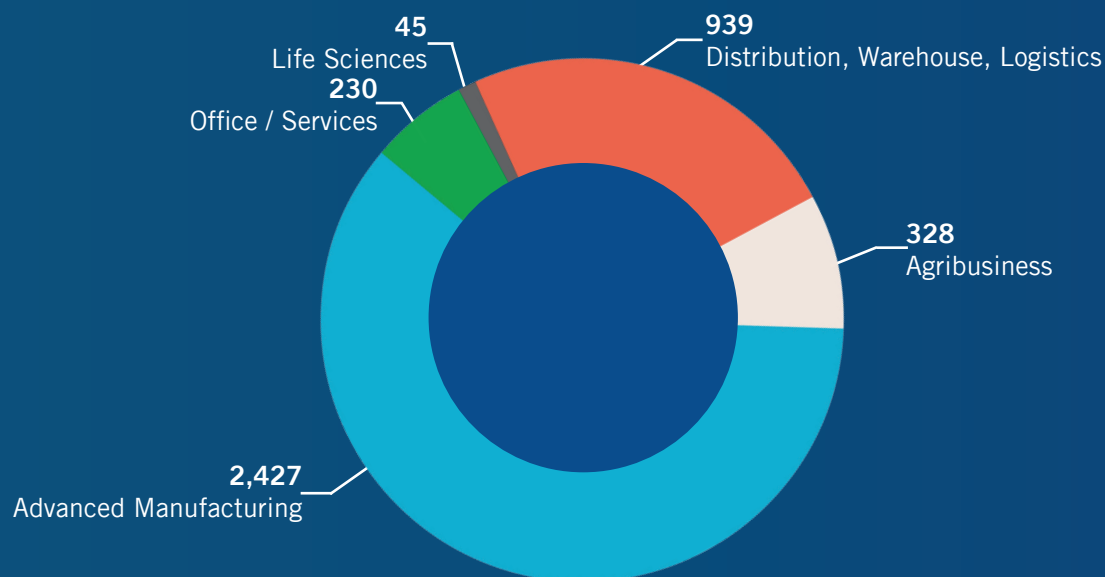


2022 ANNOUNCED PROJECTS BY SECTOR

CAPITAL INVESTMENT - \$4.37 BILLION



JOBS CREATED - 3,969





\$3.5B
INVESTMENT
1,500 NEW JOBS

REDWOOD MATERIALS

Establishing operations
in Berkeley County

Served by Berkeley Electric Cooperative

"Redwood Materials' record-breaking announcement shows that our state's strategic plan to remain a top destination for automobile manufacturers and their suppliers as the industry innovates is working. This \$3.5 billion investment, and the 1,500 jobs it will create in Berkeley County, is a transformative accomplishment that can only be attributed to the strong, talented, hardworking South Carolinians who make our state as great as it is."

Gov. Henry McMaster
South Carolina

Kontrolmatik
Technologies



\$279M
INVESTMENT
575 NEW JOBS

KONTROLMATIK TECHNOLOGIES

Establishing operations
in Colleton County

Served by Coastal Electric Cooperative

"We are very excited to locate our flagship factory in South Carolina, and we appreciate the warm welcome we have received everywhere we've gone throughout the state. South Carolina was very clear in expressing their commitment to attracting top global technology and manufacturing companies to their state, and we are convinced that we will accomplish great things with the state's support. In particular, the exceptional vocational training programs provided by South Carolina's community colleges will afford us access to the trained, skilled workers required for modern technological manufacturing."

CEO Bahadır Yetki
Kontrolmatik Technologies and Pomega
Energy Storage Technologies



\$64.3M
INVESTMENT
130 NEW JOBS

PREMIUM PEANUT

Establishing operations
in Orangeburg County

Served by Tri-County Electric Cooperative

"Premium Peanut is proud of the value we have been able to create for more than 400 grower-owners, in addition to providing quality products to customers around the world. We are thrilled to expand our operations and establish our footprint in South Carolina."

CEO Karl Zimmer
Premium Peanut



\$19.4M
INVESTMENT
18 NEW JOBS

SHAMROCK TECHNOLOGIES, INC.

Establishing operations in
Laurens County

Served by Laurens Electric Cooperative

"Shamrock Technologies is excited to be making our next investment in Laurens County as we expand our global footprint to prepare for future growth. With the highly supportive business environment and the ready availability of local professional talent, we look forward to developing and launching our new series of green and biobased specialty products in support of the circular economy right here in South Carolina."

President Joon Choo
Shamrock Technologies, Inc.



\$15M
INVESTMENT
27 NEW JOBS

**PEPSI BOTTLING
VENTURES, LLC**
Expanding operations in
Horry County
Served by Horry Electric Cooperative

"We are committed to the community of North Myrtle Beach and are excited about the opportunities this investment will bring to our customers, consumers and partners in the region. We thank the City of North Myrtle Beach and its leadership for their support and look forward to serving the community for years to come. We're excited to be here and play a role in the city's future growth."

President and CEO Derek Hill
Pepsi Bottling Ventures, LLC



\$11.5M
INVESTMENT
50 NEW JOBS

**HIRA INDUSTRIES'
AEROFOAM USA**
Establishing operations in
Abbeville County
Served by Little River Electric Cooperative

"After a careful selection of several locations, we have found our home in Abbeville, South Carolina. We feel confident that from Abbeville, we will be able to serve our diverse customer base in mainland USA, Latin America and Canada. We are also confident that we will be able to offer meaningful jobs to motivated individuals that come from in and around Abbeville. We are excited to become a dedicated part of the community, and we are thankful to South Carolina and Abbeville County for the support and opportunity."

President Alex Huis
Aerofoam USA

COMMUNITY DEVELOPMENT

In 2022 and beyond, we look forward to partnering with cooperative-served communities across the state on:



WORKFORCE DEVELOPMENT



STRATEGIC PLANNING



CUSTOMIZED TRAINING

WORKFORCE / TALENT DEVELOPMENT

Now, more than ever, communities must provide workforce solutions to existing and potential employers. From preparedness to implementation, our team is here each step of the way to help your community realize its potential.

We offer:

- Stakeholder Facilitation
- Employer Engagement
- Awareness & Marketing Campaigns
- Program Design & Development
- Data Gathering & Analysis
- Ongoing Statewide Labor Study

STRATEGIC PLANNING

Most communities and organizations find designing their future exciting, yet daunting. Having a solutions-based plan can alleviate the fear of the unknown. Whether you need a planning retreat or a strategic plan overhaul, the South Carolina Power Team is here to help.

We offer:

- One-Year Work Plans
- Organizational Management
- Community Assessments
- Community Conversations



CONCERN FOR COMMUNITY

As part of our Customized Training services, we continued to offer our “Understanding the Economic Development Process” workshop for local elected officials and community leaders. Based on the success of these workshops, we expanded these gatherings to include “Industry & Education Roundtable” events. We are thrilled to be able to provide the rare opportunity for local leaders to convene and have real, meaningful conversations about the future of their county, especially when it comes to workforce and talent.

“The Economic Development 101 Workshops were instrumental in creating a plan to bridge the gap between industry and education. We walked away with tangible goals to address the identified weaknesses. Union County is very appreciative of Broad River Electric Cooperative and the South Carolina Power Team going the extra mile to ensure our successes in Union County.”

**Dolton Williams,
Executive Director
Union County Development Board**

COMMUNITY DEVELOPMENT

CUSTOMIZED TRAINING

We recognize that every community faces unique challenges that require unique training solutions. We have several workshop topics that we customize to provide you with what you need. If you don't see what you need, we'll build it for you!

We Offer:

- Economic Development
- Leadership Development
- Elected Official Workshops
- Board of Directors Training
- Team Building
- Community Branding & Outreach

ADDITIONAL RESOURCES

The South Carolina Power Team is committed to assisting the rural communities of South Carolina as they prepare for future growth. We offer several unique resources aimed at better positioning communities in the eyes of site selectors and prospects.

FOR MORE INFORMATION ON THE SOUTH CAROLINA POWER TEAM'S COMMUNITY DEVELOPMENT EFFORTS OR HOW TO HOST A WORKSHOP IN YOUR COMMUNITY, PLEASE CONTACT CAROLINE A. WARNER, DIRECTOR OF COMMUNITY DEVELOPMENT, AT [CWARNER@SCPOWERTEAM.COM](mailto:cwarner@scpowerteam.com).

COOPERATIVE REVOLVING LOAN FUND

In 2022 the South Carolina Power Team Board of Trustees approved the guidelines for a Cooperative Revolving Loan Fund (CoRLF). The CoRLF is for the benefit of job creation/retention or community enhancement and electric load creation in the service territories of the South Carolina Electric Cooperatives. The CoRLF is available to Distribution and Retail Cooperative Members, Local Governments, and Local or Regional Non-Profit Economic Development Organizations. The CoRLF may be used for the following but is not limited to Infrastructure, Buildings (Acquisition, New Constructions, Renovations, Expansions, Site Improvements, and Demolition), Land Acquisition, Machinery and Equipment.

SITE READINESS FUND

Launched in 2014, expanded in 2019 and again in 2022, the Site Readiness Fund (SRF) is a Community Development and Preparedness initiative in the service territory of the 20 electric cooperatives to create competitive industrial sites, parks and buildings that are truly market-ready. Through investments in product development, infrastructure upgrades, land acquisition, water and wastewater upgrades, general site improvements and speculative building development, the objective of the SRF is to advance and better position industrial products in cooperative territory to make the short list for a site selection consultant or prospect.



Since 2014, the South Carolina Power Team has committed more than \$56 million to the SRF. The SRF was initially made possible by a \$30 million grant from Santee Cooper, with support from South Carolina's electric cooperatives. Matched by local funds and additional grants, the SRF has been the catalyst for more than \$259 million in combined funding on 45 projects.

The National Rural Economic Developers Association (NREDA) recognized the South Carolina Power Team with the 2017 Organization Excellence Award for its efforts in rural development and making sites market-ready through SRF investments.

RESULTING IN

7,672
JOBS

401
MEGA WATTS

\$5.473B
IN CAPITAL
INVESTMENTS

27
WINS

SUCCESS OF THE SITE READINESS FUND

ANNOUNCED PROJECTS

Redwood Materials, Berkeley Electric Cooperative

Kontrolmatik Technologies, Coastal Electric Cooperative

SC Canna, Santee Electric Cooperative

Winglts, Santee Electric Cooperative

Harbor Freight Tools Expansion, Marlboro Electric Cooperative

Northwest Lineman College, York Electric Cooperative

Shamrock Technologies, Inc., Laurens Electric Cooperative

Citadel Brands, LLC, Santee Electric Cooperative

Solstice Sleep Products, Pee Dee Electric Cooperative

DHL, Broad River Electric Cooperative

King Machine, Black River Electric Cooperative

Volvo Cars Expansion, Edisto Electric Cooperative

Huber Engineered Woods, LLC, Marlboro Electric Cooperative

Pure Blue Fish, Tri-County Electric Cooperative

Sigmatex Expansion (Headquarters), Tri-County Electric Cooperative

MM Technics Expansion, Newberry Electric Cooperative

Container Maintenance Corp., Marlboro Electric Cooperative

Sumter Easy Homes, LLC, Black River Electric Cooperative

Volvo Cars Expansion, Edisto Electric Cooperative

GE Renewables, Laurens Electric Cooperative

Harbor Freight Tools, Marlboro Electric Cooperative

Inland Port Dillon, Marlboro Electric Cooperative

MM Technics, Newberry Electric Cooperative

The Fitts Company, Tri-County Electric Cooperative

Thermo King, Tri-County Electric Cooperative

Volvo Cars, Edisto Electric Cooperative

Sigmatex, Tri-County Electric Cooperative

SITE READINESS FUND



77 COMMERCE DRIVE

The 77 Commerce Drive Building is situated north of the Town of Kingstree along 4-lane US Highway 52. Partially upfitted, the Building is +/-50,000 SF with the ability to expand to 100,000 SF.

Funding Partners: Santee Electric Cooperative

SRF funds: Utilized for building acquisition, required repairs and improvements, and completing buildout that was unfinished by previous owner.

Served by: Santee Electric Cooperative

**+/-50,000 SF
WILLIAMSBURG
COUNTY**

CLARENDON COUNTY SPEC BUILDING

As the eighth speculative building in the highly successful Clarendon County Industrial Park, the 50,000 SF (expandable to 100,000 SF) Clarendon County Speculative Building began construction in 2022. The Building offers great accessibility to I-95 and just over one-hour drive to the Port of Charleston.



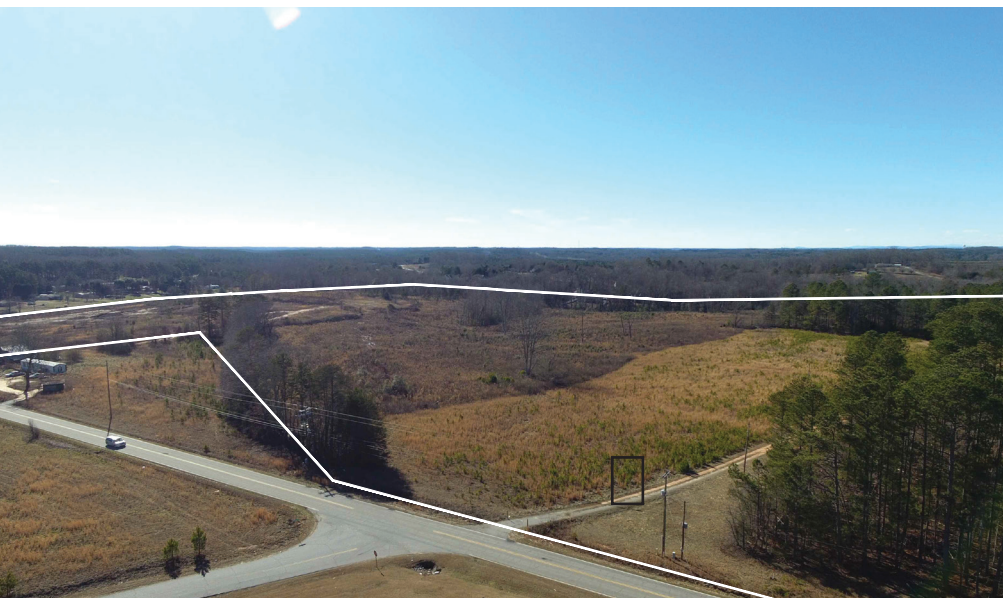
Funding Partners: Santee Electric Cooperative and Clarendon County

SRF funds: Utilized for construction of speculative building

Served by: Santee Electric Cooperative

**+/- 50,000 SF
CLARENDON
COUNTY**

SITE READINESS FUND



PROJECT BIG DOG SITE

The Project Big Dog Site is +/- 86 acres located just off of 4-lane US Highway 123. The property has the potential for over one million square feet in industrial development and holds great potential in creating capital investment in the region.

Funding Partners: Blue Ridge Electric Cooperative, Pickens County, and SC Department of Commerce

SRF funds: Utilized for property acquisition, wastewater extension, and a graded pad (as funding is available)

Served by: Blue Ridge Electric Cooperative

**+/- 86 ACRES
PICKENS
COUNTY**

MCCORMICK ECO INDUSTRIAL PARK

The McCormick ECO Industrial Park is located on US Highway 221 in McCormick County. The Industrial Park is +/-47 acres with a 23,000 SF Speculative Building and ample utility infrastructure and capacity available for industrial development needs.



Funding Partners: Little River Electric Cooperative, McCormick County, Western SC EDP, SC Department of Commerce

SRF funds: Utilized to rough grade a 210,000 SF building pad and access road

Served by: Little River Electric Cooperative

**+/- 47 ACRES
MCCORMICK
COUNTY**

SITE READINESS FUND



HIGHWAY 321 SITE

The Highway 321 Site is approximately 31 acres situated just north of the Town of York on US Highway 321. The site provides great opportunity for industrial development in western York County.

Funding Partners: York Electric Cooperative and City of York
SRF funds: Utilized for land acquisition and roadway, water and sewer extension
Served by: York Electric Cooperative

+/- 31 ACRES
YORK
COUNTY

BLYTHEWOOD INDUSTRIAL SITE

The Blythewood Industrial Site is located just north of Columbia, SC with Interstate 77 frontage in Richland County. Featuring a 300,000 SF building pad and more than 1,200 acres, with access to substantial utility infrastructure, this site is primed for development.



Photo credit: Back Forty Aerial Solutions

Funding Partners: Fairfield Electric Cooperative, Richland County, SC Department of Commerce
SRF funds: Utilized for land acquisition, due diligence, master planning, site development, and wetland mitigation
Served by: Fairfield Electric Cooperative

+/- 1,200 ACRES
RICHLAND
COUNTY

SERVING AS A LEADER IN RESEARCH AND DATA

SOUTH CAROLINA POWER TEAM DATA TOOL

The South Carolina Power Team maintains a web-based property database to support our partners' site selection process. This database goes beyond a traditional property search and provides users with extensive data to perform a desktop location analysis.

The robust data tool houses information on more than 160 available sites, parks and buildings in South Carolina electric cooperative territory. In addition, our partners can access two of our strategic initiatives, the Statewide Labor Study and the Statewide Water and Sewer Study. Lastly, this tool provides location analysis tools with robust demographic, labor, talent and business data, as well as consumer spending data with the ability for our partners to compare any South Carolina community against communities across the United States.

FOREIGN DIRECT INVESTMENT

In addition, in 2022, the South Carolina Power Team added two features to evaluate Foreign Direct Investment in South Carolina. First, there is a Foreign Direct Investment page which allows our partners to view the concentration of investment from individual countries in the last seven years across South Carolina. By selecting a country, the tool provides a heat map showing the number of projects, jobs or investments that have been made in South Carolina from companies headquartered in the selected country. Second, a country query has been added to the Business Report section of the database to allow users to map foreign existing industries across South Carolina.

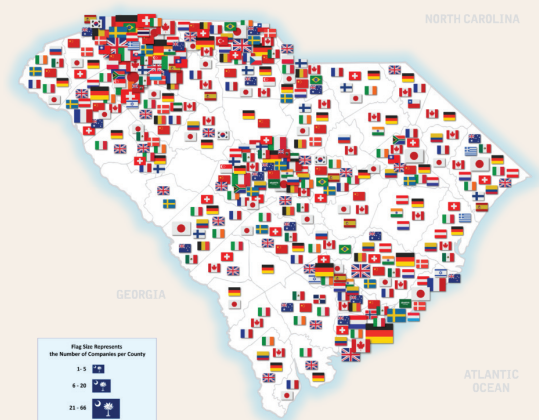
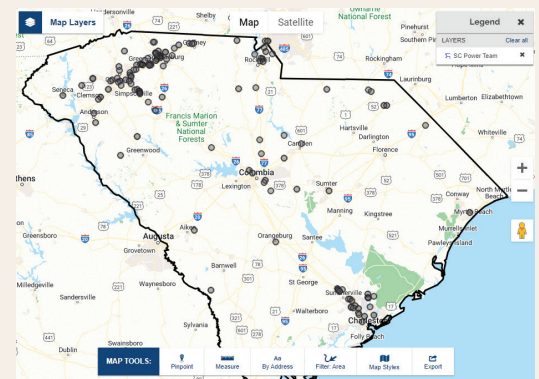
STATEWIDE LABOR STUDY

The Statewide Labor Study (formerly known as Project Pioneer) is a comprehensive, statewide labor study maintained by the South Carolina Power Team at the direction of our Board of Trustees. In 2022, the South Carolina Power Team completed a comprehensive update to the underemployment data in the Statewide Labor Study. The underemployment estimates were updated in 2022 based on changes since 2017 in the underlying composition of the drivers of underemployment. Those drivers include demographics, occupational presence (changes in occupational concentration of the area) and Labor Market indicators (based on correlation with county and local level unemployment estimates).

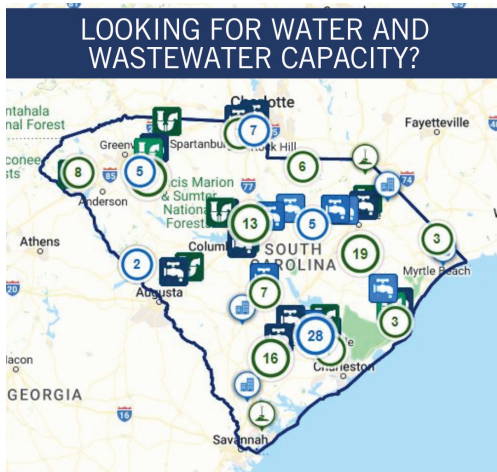
SERVING AS A LEADER IN RESEARCH AND DATA



The Labor Study tool equips business leaders and economic developers with the real-time data they need to support continued investment throughout electric cooperative territories in South Carolina.



SERVING AS A LEADER IN RESEARCH AND DATA



STATEWIDE WATER AND SEWER STUDY

Throughout 2022, we continued to improve the Statewide Water and Sewer Study that was completed in 2020. The study evaluated the water and sewer providers across South Carolina which had a documented capacity greater than 2.5 million gallons per day.

The findings of the Statewide Water and Sewer Study can also be viewed on our Property Database Web Application at www.scpowerteam.com/properties

From the site selector to the local economic development staffer, our website research & data sections are designed to serve. The tool registered the following metrics in 2022:

1,965

UNIQUE USERS

4,000+

SESSIONS

3,917

LABOR STUDY REPORTS

41

COUNTRIES ACCESSED DATA

4,643

PROPERTY REPORTS

6,859

COMMUNITY REPORTS

BUSINESS RETENTION AND EXPANSION (BRE)



Upskill Incentive

The highlight of the South Carolina Power Team's 2022 BRE effort was the deployment of the Upskill Incentive (UI). Designed to encourage commercial co-op members to invest in the skill sets of their existing employees, the South Carolina Power Team Board of Trustees approved the first UI grant awards – totaling \$56,780 – for seven commercial members in December. Collectively, those members are making \$3.966 million in capital investments that will upskill 37 existing employees (and retain 660).

The UI fills an incentive gap for small to medium-sized commercial members, operating and investing, in rural South Carolina. An intentional review of the seven 2022 awardees revealed the following facts:

- **3** The number of 2022 UI recipients that are locally owned (not part of a multi-state corporate family).
- **3.1** The average population, in thousands, for the respective towns where three 2022 UI recipients operate.
- **24** The average per capita income, in thousands of dollars, for the respective counties where three of the 2022 UI recipients operate.

Additional BRE Highlights

- **5** Expansions announced by existing commercial members representing \$74 million in capital investment.
- **90** Visits completed to commercial members.
- **11** Corporate headquarter visits completed.

UPSKILL INCENTIVE

A reimbursement to a commercial member for out-of-pocket costs incurred to train an existing employee on new/upgraded equipment

ABOUT

Total funding for the Upskill Incentive (UI) is \$100,000 per calendar year. The minimum grant amount for a commercial member is \$1,000. There is a \$25,000 incentive limit per commercial member. Applications are submitted to South Carolina Power Team staff.

QUALIFICATIONS FOR APPLICATION

1. Must be a commercial member of a South Carolina electric cooperative.
2. Must plan to invest in new/upgraded equipment in a 12-month period.
3. Must have full-time employees, each with an employment history with the commercial member of six months or more, that will need training on the new/upgraded equipment or machinery.

APPLICATION PROCESS

1. Applications for the UI are accepted on a rolling basis throughout the calendar year. To apply, email afolks@scpowerteam.com.
2. South Carolina Power Team staff reviews all UI applications and notifies the commercial member, and its serving electric cooperative, if a member's application is approved for a grant.

Your Team Resource
R. Andrew Folks
 Business Retention & Expansion Manager
 • +1.803.446.3282
 • +1.803.978.7650
 • afolks@scpowerteam.com

2022 SERVICE TO PROFESSION AND COMMUNITY



ECONOMIC DEVELOPMENT REVIEW

Known as “EDR” to its partners, allies and colleagues in the industry, the South Carolina Power Team hosts the premier professional development conference in the state, hosting more than 200 professionals, providing content and networking within economic development.

PROFESSIONAL DEVELOPMENT GRANTS

\$1,840 in grants were given to 23 women in economic development to attend Women’s Economic Development Network 2022. Plus \$2,714 was provided to two professionals for economic development certifications.

AWARDS/ACCOMPLISHMENTS

- 2022 Top Utilities in Economic Development
Site Selection Magazine
- Platinum Per Capita Award United Way of the Midlands
- United Way Pacesetter 2022

STAFF COMMUNITY AND PROFESSIONAL ENGAGEMENT

- Bradley Lunch Buddies
— Rebecca Breland and Warren Darby, Volunteers
- State Board of SC Technical College System
— Warren Darby, Member
- City of Columbia Planning Commission
— Jamie Frost, Chairman
- Prisma Health Cancer Board “The Cavalry”
— Jamie Frost, Leadership Team and Founding Member
- Industrial Asset Management Council
— James Chavez, International Chair
- SCbio
— James Chavez, Board Member
- National Rural Economic Developers Association (NREDA) Board of Directors
— James Chavez, Director
- Rotary Club of Five Points (Columbia)
— Andrew Folks, Membership Chair
- South Carolina Automotive Council
— Marc Metcalf, Member
- City of Greer Parks and Recreation Board
— Marc Metcalf, Board Member
- South Carolina Economic Developers’ Association
— Angelyn Smith, Women’s Committee, Steering Committee
— Caroline Warner, Vice Chair, Public Relations Committee
— Jamie Frost, Annual Meeting Committee
- Epworth Children’s Home Supporter
— South Carolina Power Team Staff
- Meals on Wheels
— South Carolina Power Team Staff
- Richland County Foster Parent Association Christmas Sponsor
- Communities in Schools Supporter

SOUTH CAROLINA POWER TEAM

BOARD OF TRUSTEES



B. ROBERT "BOB" PAULLING
Mid-Carolina Electric Cooperative, Inc.
 President and Chief Executive Officer
 South Carolina Power Team Board Chairman



JAMES "JIMMY" ROWE
Palmetto Electric Cooperative, Inc.
 Trustee
 South Carolina Power Team Board Vice Chairman



MARY SHERIDAN
Black River Electric Cooperative Board
 Chairman
 South Carolina Power Team Board Secretary



PAUL BASHA
York Electric Cooperative, Inc.
 President and Chief Executive Officer
 South Carolina Power Team Board of Trustees



W. F. "BILL" DAVIS SR.
Little River Electric Cooperative Board
 Chairman
 South Carolina Power Team Board of Trustees



JOHNNIE L. DICKERT
Newberry Electric Cooperative Board
 Chairman
 South Carolina Power Team Board of Trustees



JAMIE BUNTON
Coastal Electric Cooperative Board
 Vice Chairman
 South Carolina Power Team Board of Trustees



DAVID E. FELKEL
Edisto Electric Cooperative, Inc.
 President and Chief Executive Office
 South Carolina Power Team Board of Trustees



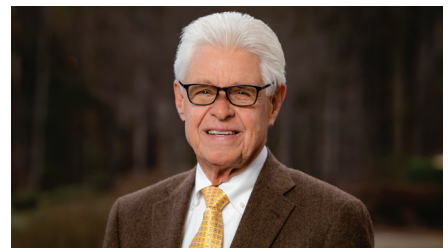
ROBERT C. HOCHSTETLER
Central Electric Power Cooperative, Inc.
 President and Chief Executive Officer
 South Carolina Power Team Board Ex Officio



TERRY MALLARD
Broad River Electric Cooperative, Inc.
 President and Chief Executive Officer
 South Carolina Power Team Board of Trustees



DANIEL "DANNY" B. SHELLEY, III
Horry Electric Cooperative
 Executive Vice President and Chief Executive Officer
 South Carolina Power Team Board of Trustees



DAVID WASSON, JR.
Laurens Electric Cooperative, Inc.
 President and Chief Executive Officer
 South Carolina Power Team Board of Trustees

In recognition for unwavering commitment to powering economic growth in the communities served by the electric cooperatives, we would like to say thank you to these Trustees that rolled off the South Carolina Power Team Board in 2022.



G. KEITH AVERY
Newberry Electric Cooperative, Inc.
President and Chief Executive Officer
South Carolina Power Team Board Secretary



ANDY MCKNIGHT
Santee Electric Cooperative, Inc.
Trustee
South Carolina Power Team Board of Trustees



EUGENE HARRIOTT, JR.
Horry Electric Cooperative Board
Vice President
South Carolina Power Team Board of Trustees

SOUTH CAROLINA POWER TEAM STAFF



JAMES A. CHAVEZ
President and Chief Executive Officer



WARREN A. DARBY, JR.
Senior Vice President, Global Business



JAMES "JAMIE" W. FROST, II, P.E.
Senior Vice President, Community Preparedness



REBECCA M. BRELAND, P.E.
Director of Site Development



R. ANDREW FOLKS
Business Retention and Expansion Manager



AMY HANSEN
Executive Assistant and Operations Manager



ANGELYN T. SMITH
Senior Project Manager



MARC METCALF
Senior Project Manager



CAROLINE A. WARNER
Director of Community Development

